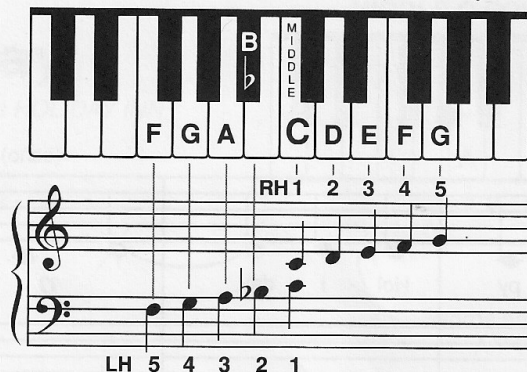


# Frosty the Snow Man

MIDDLE C POSITION (with B $\flat$ )



Words and Music by  
Steve Nelson and Jack Rollins  
Arr. by Sharon Aaronson

Moderately fast

1 4 E F G F

*mf* Fro - ty the Snow Man was a jol - ly

3 2

DUET PART (Student plays one octave higher than written.)

Moderately fast

*mp* 1 5 3 1 6 5 2 1 11 17 23 28 8va

6

3

hap - py soul, with a corn - cob pipe and a

*E F d d*

11

1 4

but - ton nose and two eyes made out of coal.

*C F*

17

Fros - ty the Snow Man is a fair - y tale, they

23

say, He was made of snow but the chil - dren

28

know how he came to life one day.